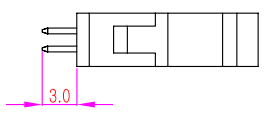
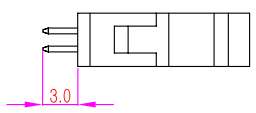
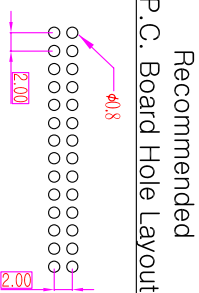
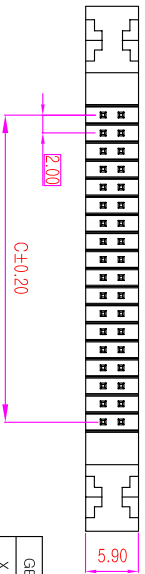
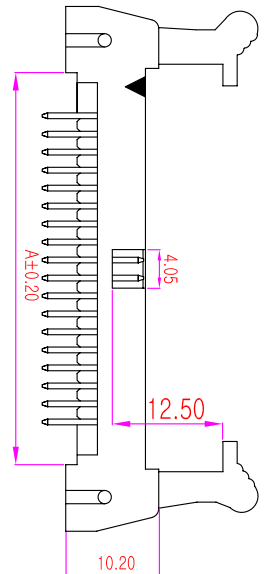
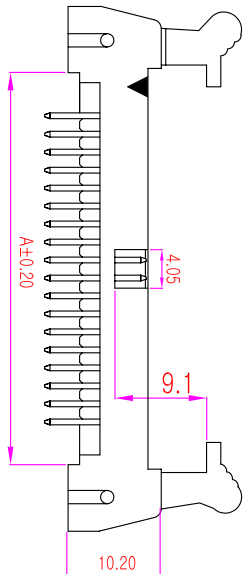
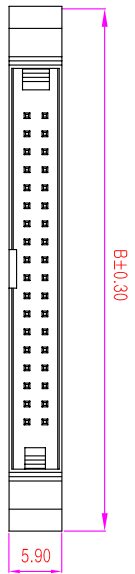


ROHS



Recommended
P.C. Board Hole Layout

Specifications

- Current Rating : 2 Amps
- Insulator Resistance : 1000 Megohms min.
- Contact Resistance : 20 m ohms max.
- Dielectric Withstanding : AC 600V
- Operating Temperature : -40°C ~ +105°C
- Contact Material : Brass
- Insulator Material : Polyester, UL 94V-0 Nylon-9T
- Contact Plated : See Option
- Standard: Full Gold Flash

Order Information

EHB1 - S 0 XX - X X XX
 Serial No. _____
 Terminal Type _____
 S : Straight Type
 No. Of Contact _____
 Latch Option _____
 L: Long Latch
 S: Short Latch
 Insulator Color Option _____
 B: Black Color
 G: Grey Color
 Contact Plated _____
 GA: Full Gold Flash

Pos.	Dimension		
	A	B	C
10	10.00	25.90	8.00
12	12.00	27.90	10.00
14	14.00	29.90	12.00
16	16.00	31.90	14.00
20	20.00	35.90	18.00
22	22.00	37.90	20.00
24	24.00	39.90	22.00
26	26.00	41.90	24.00
30	30.00	45.90	28.00
32	32.00	47.90	32.00
34	34.00	49.90	32.00
40	40.00	55.90	38.00
44	44.00	59.90	42.00
50	50.00	65.90	48.00
60	60.00	75.90	58.00

GENERAL TOLERANCE	
X. ± 0.50	X. ± 5°
.X ± 0.20	.X ± 2°
.XX ± 0.10	.XX ± 1°
DATE:2009/03/31	SSQ

単位 (UNIT)	料號 (PART NO.)	圖號 (DWG NO.)	名稱 (TITLE):
mm	EHB1-S0XX-XXXX	EHB1-S0XX	Full Latch Pitch : 2.00mm Straight Type
審核 (APPROVAL)	校對 (CHECKED)	繪圖 (DRAWN)	
Alice	Mary	Fen-Fen	
比例 (SCALE)	張數 (SHEET)	圖號 (DWG NO.)	
3:1	1/1	EHB1-S0XX	
方法 (PROJ.)	更改 (REV.)		
第一角 (1st Angle)	A		

艾允企業有限公司
 I/O PARTS Enterprise Co., Ltd.

Rev	Modification	Date	Validate