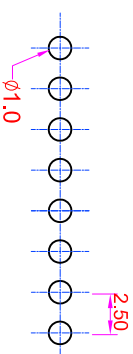
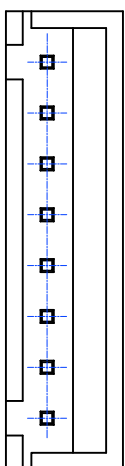


Recommended P.C. Board Hole Layout



Specifications
 Current Rating: 3A AC, DC
 Voltage Rating: 250V AC Maximum
 Operating Temp: -25°C ~ +85°C
 Contact Resistance: 10mΩMax
 Insulation Resistance: 1000mΩ Min
 Terminal Material: Brass/Tin-plated
 Material: Nylon 66, UL94V-0

Order Information

WA2501J - S 0 XX - 0 X TA

Serial Type _____

Terminal Type _____

S : Straight Type

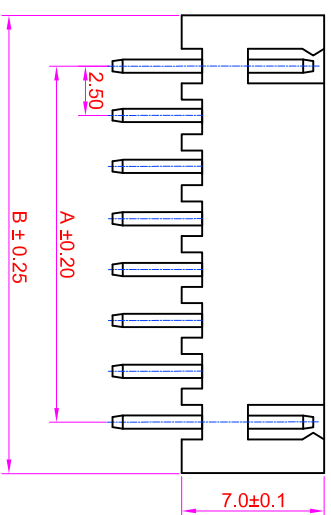
No. of Contacts _____
 02Pin ~20Pin

Pin Type _____

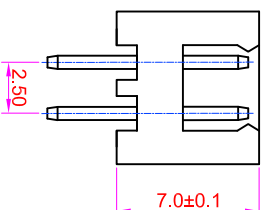
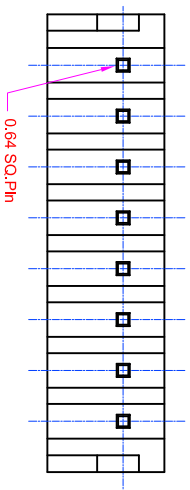
0: No Kinked (Standard)

K: Kinked

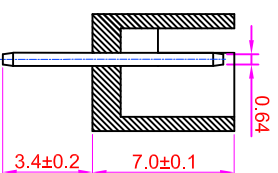
Contact Plating _____
 TA : Tin Plated (Standard)



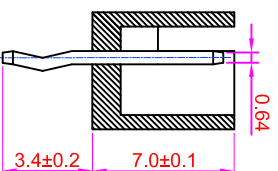
3Pin ~ 20 Pin



2 Pin



Standard



Kinked

Poles	Dimension (mm)		Dimension (mm)	
	A	B	A	B
2	2.50	7.50	27.50	32.50
3	5.00	10.00	13	30.00
4	7.50	12.50	14	32.50
5	10.00	15.00	15	35.00
6	12.50	17.50	16	37.50
7	15.00	20.00	17	40.00
8	17.50	22.50	18	42.50
9	20.00	25.00	19	45.00
10	22.50	27.50	20	47.50
11	25.00	30.00		52.50

GENERAL TOLERANCE		單位 (UNIT)		料號 (PART NO.)		圖號 (DWG NO.)		名稱 (TITLE):	
X. ± 0.50	X. ° ± 5°	mm		WA2501J-S0XX-0XTA		WA2501J-S0XX		IO PARTS Enterprise Co., Ltd.	
.X ± 0.20	.X ° ± 2°	Alice		Mary		Fen-Fen		Wire To Board Pitch: 2.50mm	
.X X ± 0.10	.X X ° ± 1°	SBZ		DATE:2008/03/05		SCALE 3:1		Wafer / Straight Type	