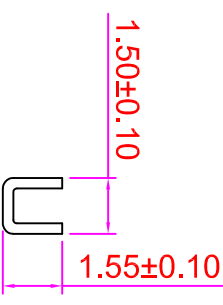
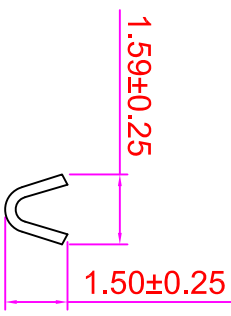
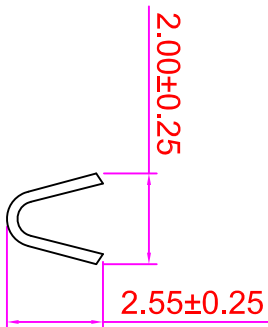
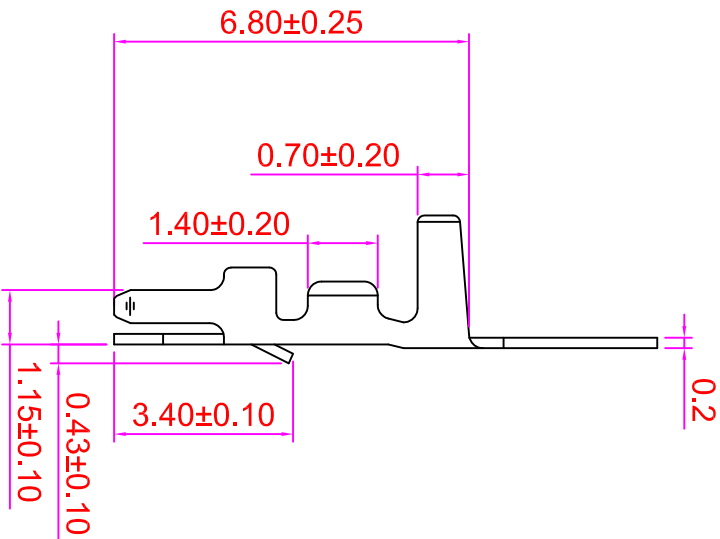
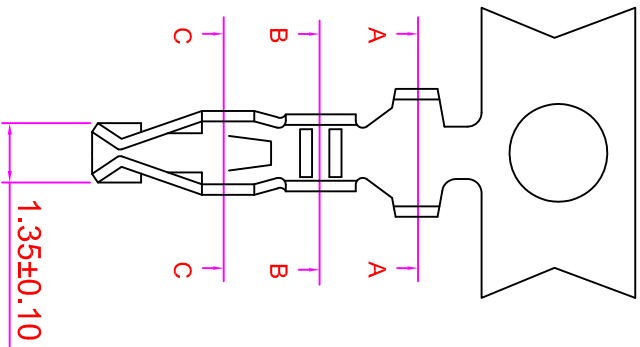


# ROHS

**SPECIFICATION:**

Material	Finish	Qty/reel	Wire Range
Phosphor bronze	Tin-plated	10,000 pcs	AWG #22-#28



**SPECIFICATIONS**

**Electrical**

Current Rating: 1A AC, DC  
 Voltage Rating: 100V AC/ max.  
 Operating Temp.: -25°C ~ +85°C  
 Insulation Resistance: 1000Ω min.  
 Dielectric Withstanding Voltage: 800V AC/ min.  
 Contact Resistance: 20Ω max.  
 Material: Phosphor Bronze / Tin-plated

**Order Information**

**TE2001D - TA**

Serial No. \_\_\_\_\_

Plated  
 TA : Tin Plated

GENERAL TOLERANCE		單位 (UNIT)	料號 (PART NO.)	製圖 (DRAWING NO.)	比例 (SCALE)	張數 (SHEET)	名稱 (TITLE):
X. ± 0.50	X. ° ± 5°	mm	TE2001D-TA	TE2001D-TA	3:1	1/1	IO PARTS Enterprise Co., Ltd.
.X ± 0.20	.X ° ± 2°	審核 (APPROVAL)	檢對 (CHECKED)	製圖 (DRAWN)	角法 (PROJ.)	REV.	Pitch :2.0mm Terminal For HU2001D Housing
.XX ± 0.10	.XX ° ± 1°	Alice	Mary	Fen-Fen	◎	A	
DATE:2009/09/05	SBZ						



IO PARTS Enterprise Co., Ltd.  
 Pitch :2.0mm Terminal  
 For HU2001D Housing