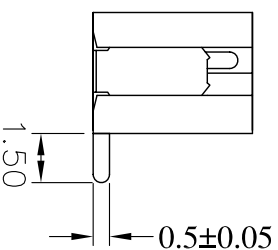
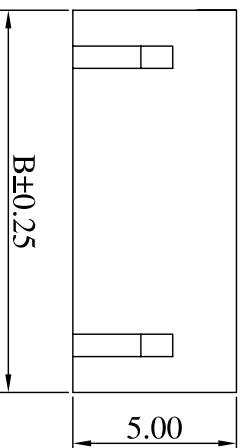
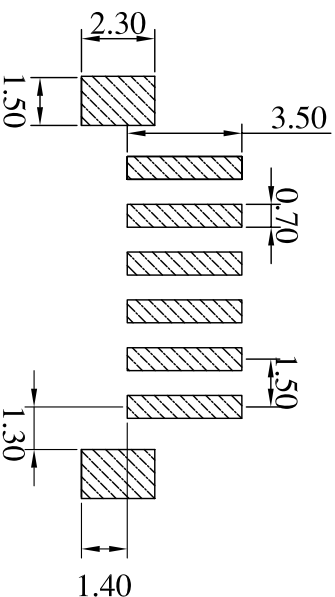
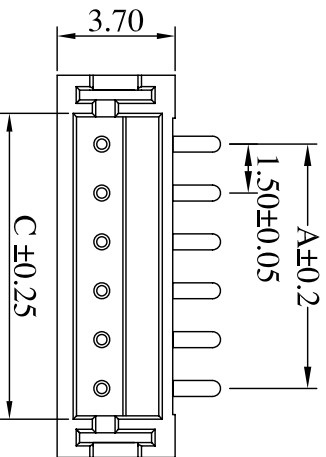


ROHS

Recommended P.C. Board SMD Layout



SPECIFICATIONS

Current rating : 1A AC,DC
 Voltage rating : 100V AC,DC
 Temperature range : -25° C to +85 %% DC
 Contact resistance : 20m Max.
 Insulation resistance : 500 Min.
 Withstanding voltage : 500V AC/minute
 Material : Pin-Brass/Tin-plated
 Base-Nylon 6T, UL94V-0

Order Information

WA1501Z - M 0 XX - V 0 XX - X X
 Serial No. _____
 Terminal Type _____
 M : SMD Type _____
 No. of Contacts _____
 Type Option _____
 V: Vertical Type _____
 Contact Plated _____
 Cap Option _____
 B : Blank _____
 F : Film _____
 Packing Method _____
 T : In Tube _____
 R : Tape & Reel _____

Poles	Dimension (mm)		
	A	B	C
02	1.50	6.00	3.60
03	3.00	7.50	5.10
04	4.50	9.00	6.60
05	6.00	10.50	8.10
06	7.50	12.00	9.60
07	9.00	13.50	11.10
08	10.50	15.00	12.60
09	12.00	16.50	14.10
10	13.50	18.00	15.60
11	15.00	19.50	17.10
12	16.50	21.00	18.60
13	18.00	22.50	20.10

GENERAL TOLERANCE

單位 (UNIT)	料號 (PART NO.)	圖號 (DWG. NO.)
X. ± 0.50	WA1501-M0XX-V0XX-XX	WA1501Z-M0XX
.X ± 0.20		
.XX ± 0.10		
2008/12/05		

單位 (UNIT)

料號 (PART NO.)

圖號 (DWG. NO.)

Alice

Mary

Fen-Fen

SCALE 2.5 : 1

SHEET 1 / 1

REV. 1.0



宏允企業有限公司
 IO PARTS Enterprise Co., Ltd.
 Wire to Board Pitch : 1.5mm
 Vertical SMD Type