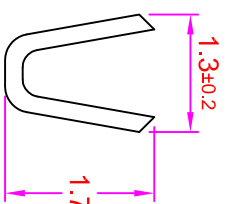
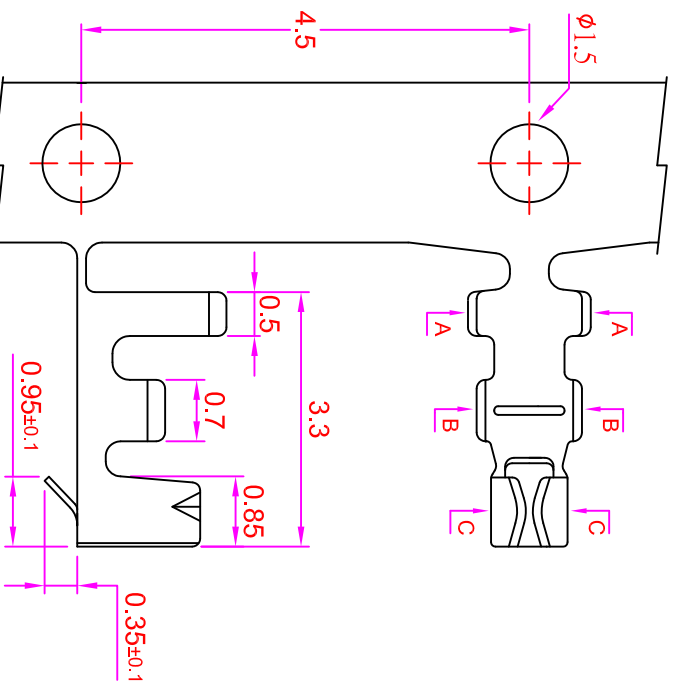
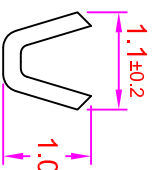


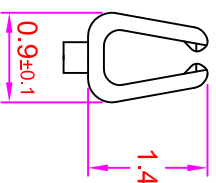
ROHS



Section A-A



Section B-B



Section C-C

Rev	Modification Content	Date	Validate
-----	----------------------	------	----------

SPECIFICATIONS

Electrical

- Current Rating: 1A AC, DC
 - Voltage Rating: 125V AC/ max.
 - Operating Temp.: -25°C ~ +85°C
 - Insulation Resistance: 100M Ω / min.
 - Dielectric Withstanding Voltage: 250V AC/ min.
 - Contact Resistance: 20m Ω / max.
- Material**
Terminal material: Phosphor Bronze/ Tin-plated
Wire Range: 28 to 32AWG

Order Information

TE1251 - TA

Serial No. _____

Plating Option _____

TA: TIN PLATING

GENERAL TOLERANCE		單位 (UNIT)	料號 (PART NO.)	圖號 (DWG NO.)	名稱 (TITLE):
X. ± 0.50	X. ° ± 5°	mm	TE-1251-TA	TE1251-TA	允企業有限公司 IO PARTS Enterprise Co., Ltd.
.X ± 0.20	.X ° ± 2°				
.XX ± 0.10	.XX ° ± 1°				
DATE:2019/11/19	SBZ				
		審核 (APPROVAL)	核對 (CHECKED)	制圖 (DRAWN)	比例 (SCALE)
		Alice	Mary	Fen-Fen	2.5 : 1
					張數 (SHEET)
					1 / 1
					縮放 (REV.)
					1.0
					Pitch: 1.25mm Wire To Board / Terminal