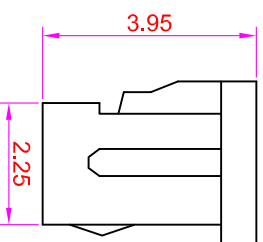
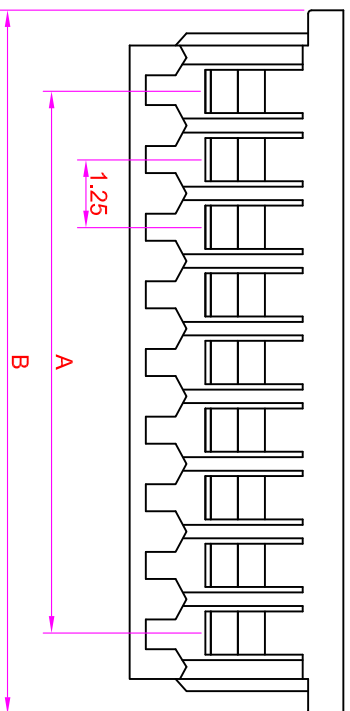
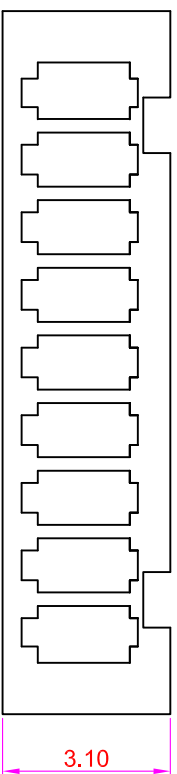


# ROHS



## SPECIFICATIONS

### Electrical

Current Rating: 1A AC, DC

Voltage Rating: 125V AC/ max.

Operating Temp.: -20°C ~ +85°C

Insulation Resistance: 100m Ω/ min.

Dielectric Withstanding Voltage: 250V AC/ min.

Contact Resistance: 20m Ω/ max.

### Material

Material: Nylon66, UL94V-0

Rev	Modification Content	Date	Validate

### Order Information

**HU1251 - XX**

Serial No. \_\_\_\_\_


No. of Contacts \_\_\_\_\_

Poles	Dimensions		Poles	Dimensions	
	A	B		A	B
02	1.25	4.25	09	10.00	13.00
03	2.50	5.50	10	11.25	14.25
04	3.75	6.75	11	12.50	15.50
05	5.00	8.00	12	13.75	16.75
06	6.25	9.25	13	15.00	18.00
07	7.50	10.50	14	16.25	19.25
08	8.75	11.75	15	17.50	20.50

GENERAL TOLERANCE	
X. ± 0.50	X. ± 5°
.X ± 0.20	.X ± 2°
.XX ± 0.10	.XX ± 1°
DATE:2019/11/19	SBZ

單位 (UNIT)	料號 (PART NO.)	審核 (CHECKED)	繪圖 (DRAWN)
mm	HU1251-XX	Mary	Fen-Fen
審核 (APPROVAL)			
Alice			

圖號 (DWG NO.)	比例 (SCALE)	圖號 (DWG NO.)	比例 (SCALE)
HU1251-XX	2.5 : 1	HU1251-XX	2.5 : 1
	PROJ.		PROJ.


**允允企業有限公司**  
 IO PARTS Enterprise Co., Ltd.  
 名稱 (TITLE): Pitch 1.25 Wire To Board / Housing