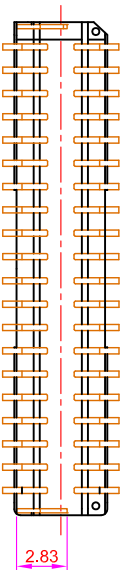
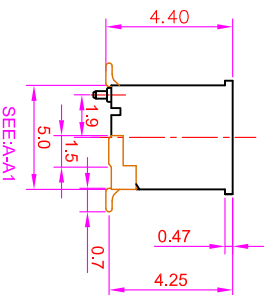
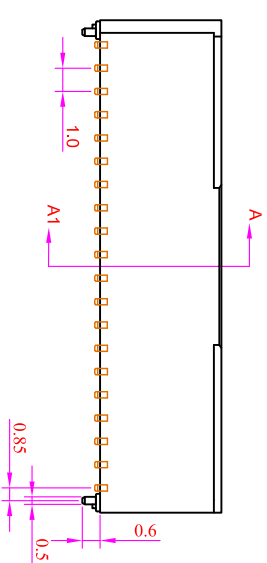
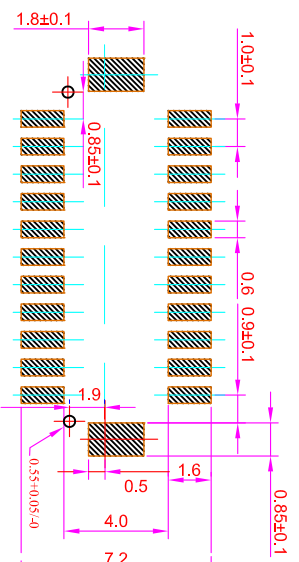
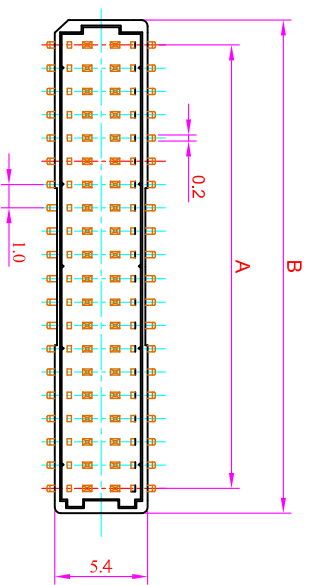


ROHS

Recommended P.C. Board SMD Layout



Circuits	Dimension mm (in.)	
	A	B
2*10	9.0(.354)	12.3(.484)
2*15	14.0(.551)	17.3(.681)
2*20	19.0(.748)	22.3(.878)
2*25	24.0(.945)	27.3(.1.075)

Type Option _____
 B : No Cap
 P : Plastic Cap

Type Option _____
 T : Tube
 R : Tape & Reel

Order Information

WA1001- M 2 XX -V 0 TA- X X

Serial No. _____
 Terminal Type _____
 M : SMD Type _____
 Pin Type _____
 2 : Dual Row _____
 No. of Contact Per Row _____
 Type Option _____
 V : Vertical Type _____
 Post Option _____
 0 : Without Post _____
 1 : With Post _____
 Contact Plated _____

Specifications

Voltage Rating: 50VAC DC
 Current Rating: 1.0A AC DC
 Contact Resistance: Initial value/20mΩmax
 After environmental testing/40mΩmax
 Insulation Resistance: 100MΩmin
 Temperature Range: -40°C~+105°C
 Withstanding voltage:500V AC/minute
 Header contact:Phosphor Bronze, Tin Plated
 Water:Glass-filled polyamide, UL94V-0, natural(Ivory)
 Solder tad:Brass, copper-undercoated, tin/lead-plated

GENERAL TOLERANCE		單位 (UNIT)		料號 (PART NO.)		圖號 (DWG NO.)		比例 (SCALE)		圖號 (DRAWN)		圖號 (CHECKED)		圖號 (APPROVAL)		DATE:2019/11/19	
X. ± 0.50	X. ° ± 5°	mm	mm	WA1001-M2XX	WA1001-M2XX	3:1	3:1	Fen-Fen	Mary	Alice	SBZ	SBZ	SBZ	SBZ	SBZ	SBZ	SBZ
.X ± 0.20	.X ° ± 2°																
.X X ± 0.10	.X X ° ± 1°																

玖允企業有限公司
 IO PARTS Enterprise Co., Ltd.

名號 (TITLE): Pitch : 1.0 Wire To Board
 Dual Row Vertical SMD Type