

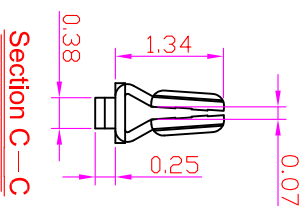
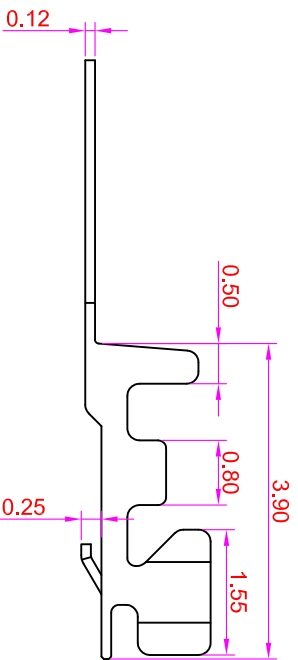
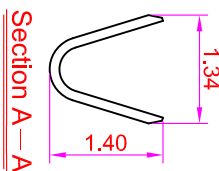
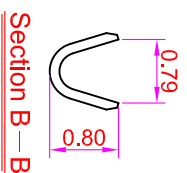
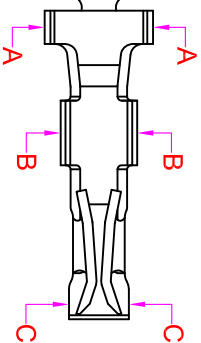
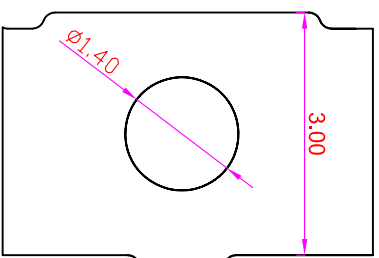
ROHS

Rev	Modification	Date	Validate

SPECIFICATIONS

Current Rating: 1A AC, DC
 Voltage Rating: 50V AC/ max.
 Operating Temp.: -25°C ~ +85°C
 Insulation Resistance: 100MΩ/ min.
 Dielectric Withstanding Voltage: 500V AC/ min.
 Contact Resistance: 20MΩ/ max.

Terminal maerial: Phosphor Bronze/ Tin-plated
 Wire Range: 28 to 32AWG



Order Information
TE1001 - TA
 Serial No. _____
 Plating Option _____
 TA: TIN PLATING

GENERAL TOLERANCE		單位 (UNIT)	料號 (PART NO.)	圖號 (DWG NO.)	名額 (TITLE):
X. ± 0.50	X. ° ± 5°	mm	TE1001-TA	TE1001-TA	IO PARTS Enterprise Co., Ltd.
.X ± 0.20	.X ° ± 2°		樣機 (APPROVAL)	比例 (SCALE)	張數 (SHEET)
.XX ± 0.10	.XX ° ± 1°	Alice	核對 (CHECKED)	3:1	1/1
DATE:2019/11/19	SBZ		Mary	角法 (PROJ.)	更改 (REV.)
			Fen-Fen		A
					Terminal for Dual & Single Housing

IO PARTS Enterprise Co., Ltd.
 Pitch :1.0 Wire To Board
 Terminal for Dual & Single Housing