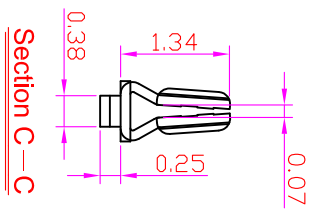
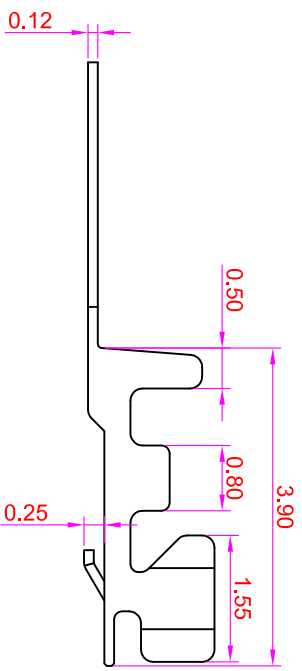
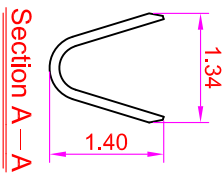
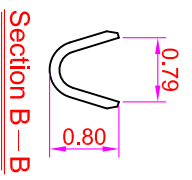
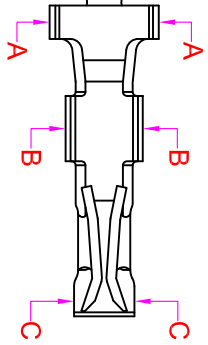
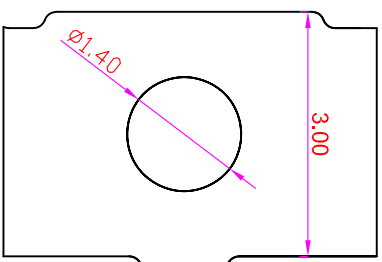


**ROHS**



Rev	Modification	Date	Validate

**SPECIFICATIONS**

Current Rating: 1A AC, DC  
 Voltage Rating: 50V AC/ max.  
 Operating Temp.: -25°C ~ +85°C  
 Insulation Resistance: 100MΩ/ min.  
 Dielectric Withstanding Voltage: 500V AC/ min.  
 Contact Resistance: 20MΩ/ max.

Terminal material: Phosphor Bronze/ Tin-plated  
 Wire Range: 28 to 32AWG

**Order Information**

TE1001 - TA

Serial No. \_\_\_\_\_

Plating Option \_\_\_\_\_

TA: TIN PLATING

GENERAL TOLERANCE		單位 (UNIT)	料號 (PART NO.)	圖號 (DWG. NO.)	比例 (SCALE)	張數 (SHEET)	名稱 (TITLE)
X. ± 0.50	X. ° ± 5°	mm	TA1001-TA	TA1001-TA	3:1	1/1	TE1001 - TA
.X ± 0.20	.X ° ± 2°	mm	檢驗 (CHECKED)	製圖 (DRAWN)	角法 (PROJ.)	更改 (REV.)	IO PARTS Enterprise Co., Ltd.
.XX ± 0.10	.XX ° ± 1°	mm	Alice	Fen-Fen	第一角法 (1st ANGLE)	A	Pitch : 1.0 Wire To Board
DATE: 2019/11/19	SBZ		Mary				Terminal for Dual & Single Housing

**IO** 遠允企業有限公司  
 IO PARTS Enterprise Co., Ltd.