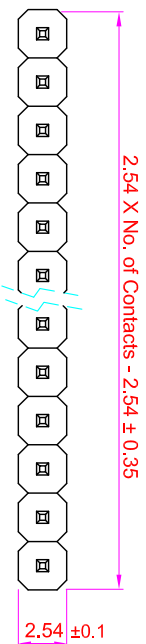
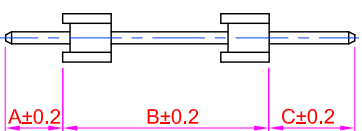
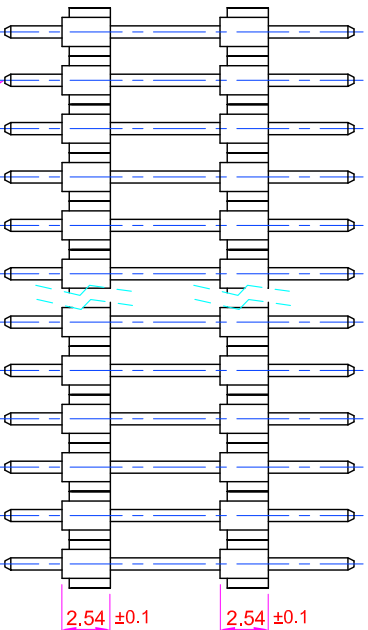
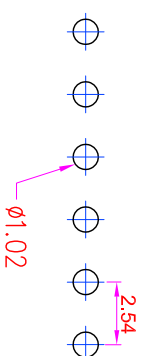


ROHS



**Recommended
P.C. Board Hole Layout**



Rev	Modification	Date	Validate

Specifications

- Current Rating : 3 Amps
- Insulator Resistance : 1000 Megohms min.
- Contact Resistance : 20 m ohms max.
- Dielectric Withstanding : AC 600V
- Operating Temperature : -40°C ~ +105°C
- Contact Material : Brass
- Insulator Material : Polyester, UL 94V-0 P.B.T.
- Contact Plated : See Option
- Standard: Full Gold Flash

Order Information

PHAA - S 1 XX - XX XX

- Serial Type _____
- Terminal Type _____
- S : Straight Type _____
- Row Type _____
- 1 : Single Row _____
- No. of Pin Per Row _____
- Terminal Dim. _____
- 01.A=....., B=....., C=.....
- 02.A=....., B=....., C=.....
- 03.A=....., B=....., C=.....
- Contact Plating _____

Contact Plating Option	Full Gold Plating	Gold Plating On Contact Area TIn Plating On Solder Area	Full Tin Plating
GA : Gold Flash GC : Gold 10u" GD : Gold 15u" GE : Gold 30u"	SA : Gold Flash SC : Gold 10u" SD : Gold 15u" SE : Gold 30u"	TA : Tin 100u"	

GENERAL TOLERANCE		單位 (UNIT)	料號 (PART NO.)	圖號 (DWG. NO.)	名廠 (TITLE):
X. ± 0.50	X. ° ± 5°	mm	PHAA-S1XX-XXXX	PHAA-S1XX	IO PARTS Enterprise Co., Ltd.
.X ± 0.20	.X ° ± 2°		審核 (APPROVAL)	比例 SCALE 3:1	Pin Header Pitch: 2.54mm
.XX ± 0.10	.XX ° ± 1°	Alice	核對 (CHECKED)	圖法 PROJ.	H: 2.5mm, Dual Body, Single Row, Straight Type
DATE: 2008/03/05			Mary	圖號 REV. A	

IO 允允企業有限公司
IO PARTS Enterprise Co., Ltd.