

ROHS

Recommended  
P.C. Board SMD Layout

| Rev | Modification | Date | Validate |
|-----|--------------|------|----------|
|     |              |      |          |

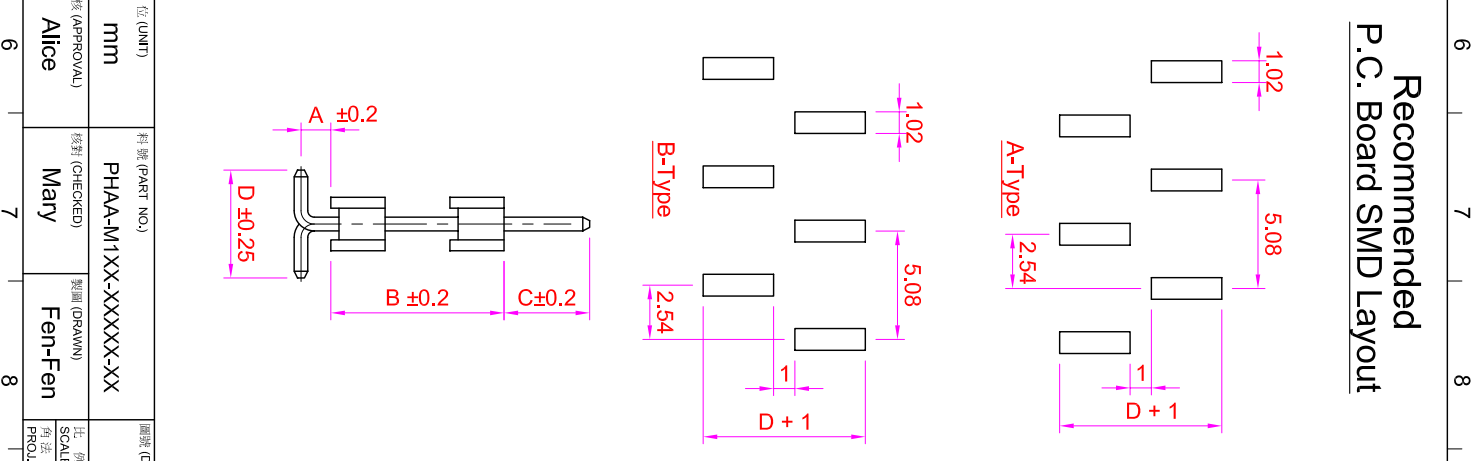
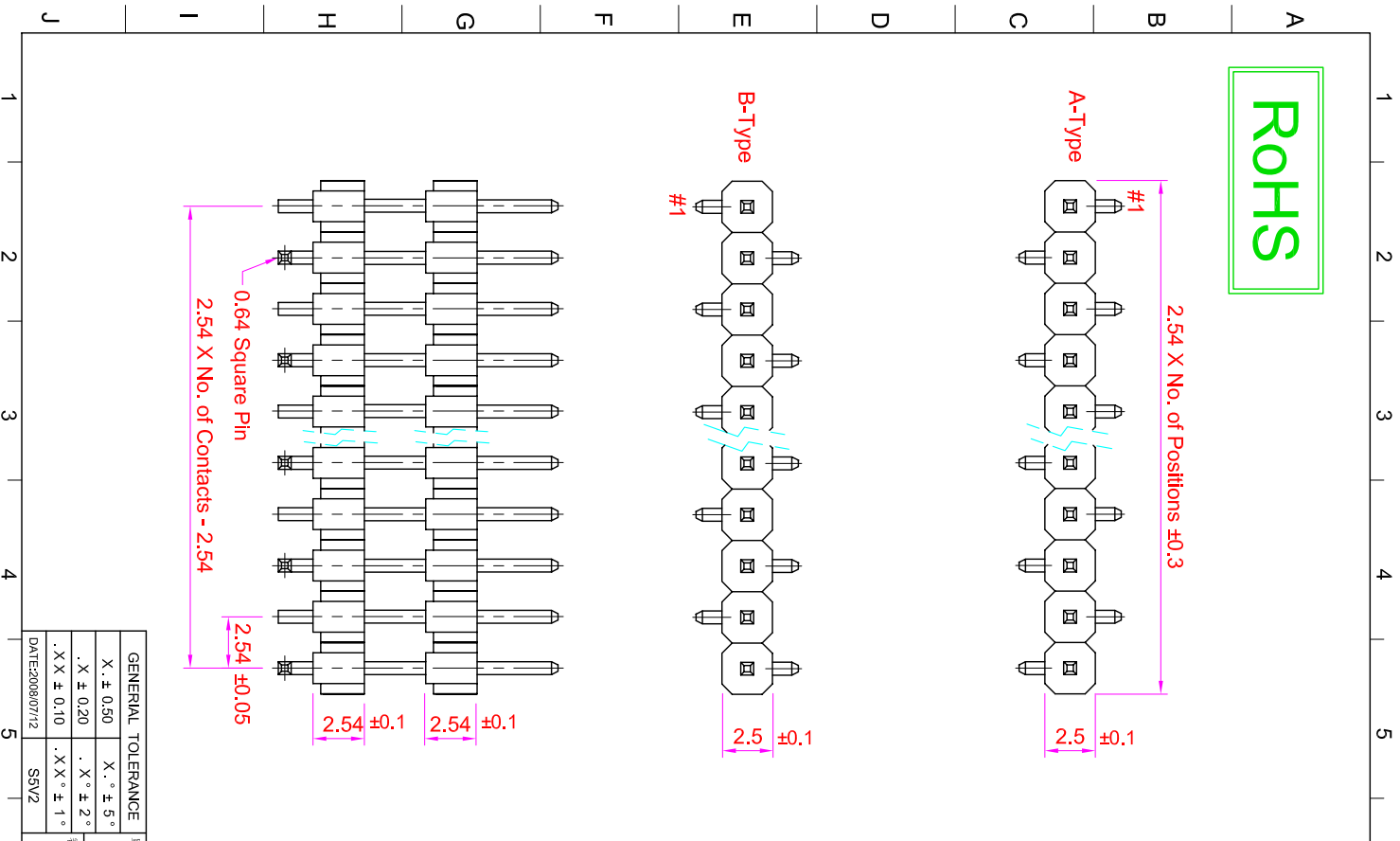
Specifications

Current Rating : 3 Amps  
 Insulator Resistance : 1000 Megohms min.  
 Contact Resistance : 20 m ohms max.  
 Dielectric Withstanding : AC 600V  
 Operating Temperature : -40°C ~ +105°C  
 Contact Material : Brass  
 Insulator Material : Polyester, UL 94V-0 Nylon-6T  
 Contact Plated : See Option  
 Standard: Full Gold Flash

Order Information

PHAA - M 1 XX - X XX XX - X X  
 Serial Type  
 Terminal Type  
 M : SMD Type  
 Row Type  
 1 : Single Row  
 No. of Pin Per Row  
 Pin Type  
 A : A Type  
 B : B Type  
 Terminal Dim.  
 01. A=... B=... C=... D=...  
 02. A=... B=... C=... D=...  
 03. A=... B=... C=... D=...  
 Contact Plating  
 Cap Option  
 B : Blank  
 P : Plastic Cap  
 Packing Method  
 S : Sample Box  
 T : In Tube

| Contact Plating Option  | Full Gold Plating   | Gold Plating On Contact Area<br>TIn Plating On Solder Area | Full Tin Plating |
|---|---|--|------------------|
| GA : Gold Flash<br>GC : Gold 10u"<br>GD : Gold 15u"<br>GE : Gold 30u" | SA : Gold Flash<br>SC : Gold 10u"<br>SD : Gold 15u"<br>SE : Gold 30u" | TA : Tin 100u"   |                  |



| GENERAL TOLERANCE |            | 單位 (UNIT)     |  |
|-------------------|------------|---------------|--|
| X. ± 0.50         | X. ° ± 5°  | mm            |  |
| .X ± 0.20         | .X ° ± 2°  | 審核 (APPROVAL) |  |
| .XX ± 0.10        | .XX ° ± 1° | Alice         |  |
| DATE:20080712     | SSVZ       | Mary          |  |

| 料號 (PART NO.) | PHAA-M1XX-XXXXX-XX |
|---------------|--------------------|
| PHAA-M1XX     |                    |

| 圖號 (DWG NO.) | PHAA-M1XX |
|--------------|-----------|
| SCALE 3:1    |           |
| 張數 1/1       |           |
| REV. A       |           |

IO PARTS Enterprise Co., Ltd.  
 名稱 (TITLE): Pin Header Pitch:2.54 X 2.54mm  
 H:2.54mm, Single Row, Dual Body, SMD Type

