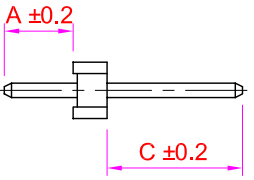
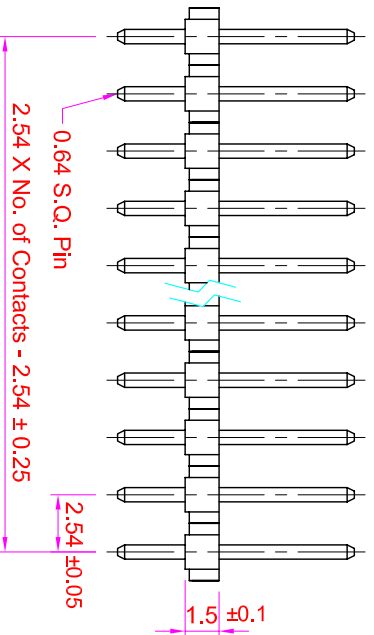
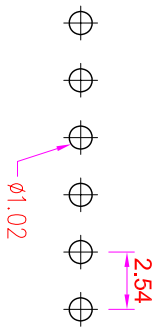
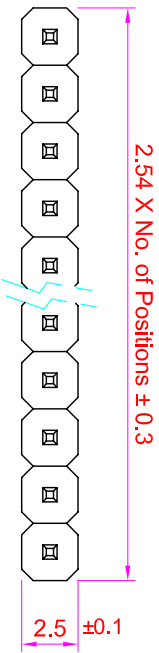


ROHS



**Recommended
P.C. Board Hole Layout**

- Specifications**
- Current Rating : 3 Amps
 - Insulator Resistance : 1000 Megohms min.
 - Contact Resistance : 20 m ohms max.
 - Dielectric Withstanding : AC 600V
 - Operating Temperature : -40° C ~ +125° C
 - Contact Material : Brass
 - Insulator Material : Polyester, UL 94V-0 Nylon-6T
 - Contact Plated : See Option
- Standard: Full Gold Flash

Order Information

PHA2 - S 1 XX - XX XX

- Serial Type _____
- Terminal Type _____
- S : Straight Type _____
- Row Type _____
- 1 : Single Row _____
- No. of Pin Per Row _____
- Terminal Dim. _____
- 01. A=3.43mm, C=2.67mm,
- 02. A=..., C=.....
- 03. A=..., C=.....
- Contact Plating _____

Contact Plating Option	Full Gold Plating	Gold Plating On Contact Area Tin Plating On Solder Area	Full Tin Plating
	GA : Gold Flash GC : Gold 10u" GD : Gold 15u" GE : Gold 30u"	SA : Gold Flash SC : Gold 10u" SD : Gold 15u" SE : Gold 30u"	TA : Tin 100u"

GENERAL TOLERANCE		單位 (UNIT)
X. ± 0.50	X. ° ± 5°	mm
. X ± 0.20	. X ° ± 2°	mm
. . X X ± 0.10	. . X X ° ± 1°	Alice
DATE:201009/28	SSVZ	

PH42-S1XX-XXXX	PH42-S1XX-XXXX	Fen-Fen
審核 (APPROVAL)	核對 (CHECKED)	製圖 (DRAWING)
Alice	Mary	Fen-Fen

PH42-S1XX	PH42-S1XX
圖號 (DWG NO.)	圖號 (DWG NO.)
比例 SCALE 3:1	張數 SHEET 1/1
繪法 PROJ. 第三角	更改 REV. A

IO PARTS 允企業有限公司
IO PARTS Enterprise Co., Ltd.

名稱 (TITLE): Pin Header Pitch: 2.54 X 2.54mm
H: 1.5mm, Single Row, Straight Type