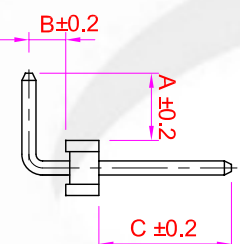
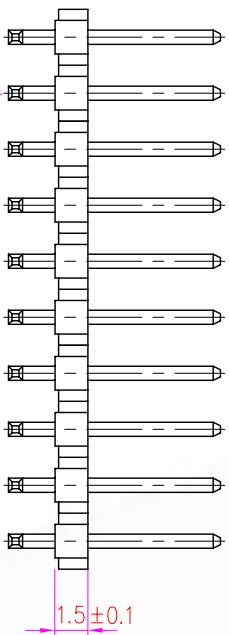
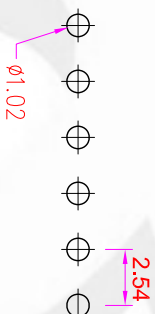
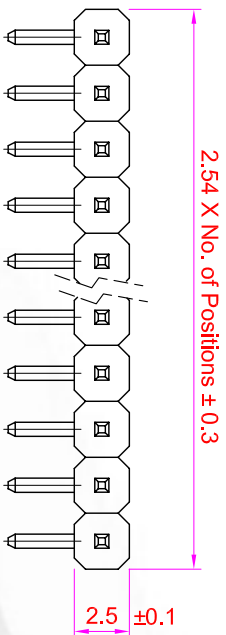


ROHS

**Recommended
P.C. Board Hole Layout**



Specifications

- Current Rating : 3 Amps
- Insulator Resistance : 1000 Megohms min.
- Contact Resistance : 20 m ohms max.
- Dielectric Withstanding : AC 600V
- Operating Temperature : -40°C ~ +105°C
- Contact Material : Brass
- Insulator Material : Polyester, UL 94V-0 Nylon-6T
- Contact Plated : See Option
- Standard: Full Gold Flash

Order Information

PHA2 - R 1 XX - XX XX

- Serial Type _____
- Terminal Type _____
- R : Right Angle Type
- Row Type _____
- 1 : Single Row
- No. of Pin Per Row _____
- Terminal Dim. _____
- 01. A=3.0, B=1.5, C=6mm(Standard)
- 02. A=....., B=....., C=.....
- 03. A=....., B=....., C=.....

Contact Plating _____

Contact Plating Option	Full Gold Plating	Gold Plating On Contact Area Tin Plating On Solder Area	Full Tin Plating
	GA : Gold Flash GC : Gold 10u" GD : Gold 15u" GE : Gold 30u"	SA : Gold Flash SD : Gold 10u" SE : Gold 15u" SF : Gold 30u"	TA : Tin 100u"

GENERAL TOLERANCE		單位 (UNIT)	料號 (PART NO.)	圖號 (DWG NO.)	比例 (SCALE)	圖號 (DWG NO.)	名稱 (TITLE):
X ± 0.50	X $\pm 5^\circ$	mm	PHA2-R1XX-XXXX	PHA2-R1XX	3:1	PHA2-R1XX	Pin Header Pitch: 2.54 X 2.54mm
.X ± 0.20	.X $\pm 2^\circ$		審核 (CHECKED)	製圖 (DRAWN)	有法 (PROJ.)	張數 (SHEET)	H: 1.5mm, Single Row, Right Angle, Type
.XX ± 0.10	.XX $\pm 1^\circ$	Alice	Mary	Fen-Fen	REV.	A	
DATE: 2008/03/05	SSV2						

宏允企業有限公司
IO PARTS Enterprise Co., Ltd.