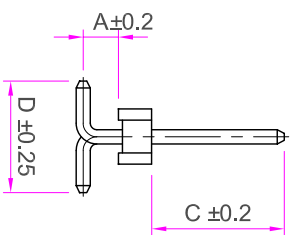
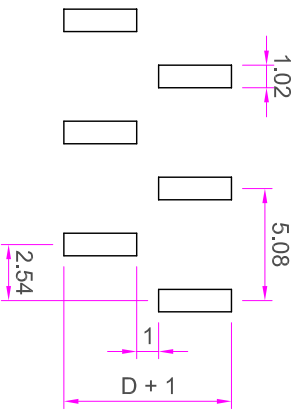
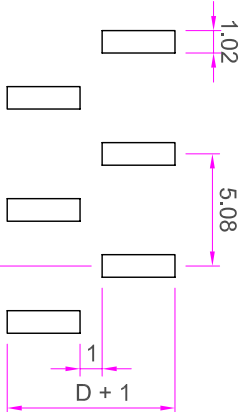
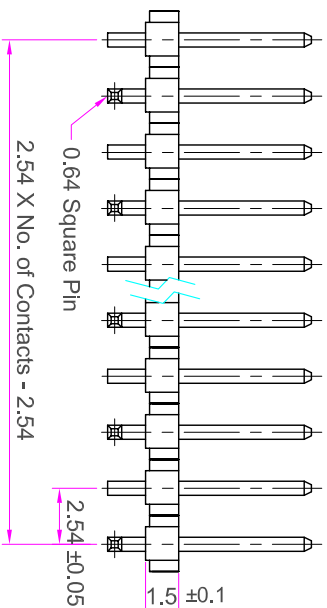
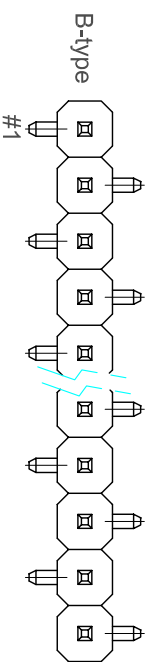
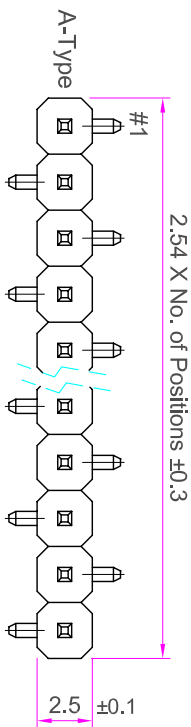


ROHS

**Recommended
P.C. Board SMD Layout**



Rev	Modification	Date	Validate

Specifications

Current Rating : 3 Amps
 Insulator Resistance : 1000 Megohms min.
 Contact Resistance : 20 m ohms max.
 Dielectric Withstanding : AC 600V
 Operating Temperature : -40° C ~ +105° C
 Contact Material : Brass
 Insulator Material : Polyester, UL 94V-0 Nylon-6T
 Contact Plated : See Option
 Standard: Full Gold Flash

Order Information

PHA2 - M 1 XX - X XX XX - X X
 Serial Type
 Terminal Type
 M : SMD Type
 Row Type
 1 : Single Row
 No. of Pin Per Row
 Pin Type
 A: A Type
 B: B Type
 Terminal Dim.
 01. A=... C=... D=...
 02. A=... C=... D=...
 03. A=... C=... D=...
 Contact Plating
 Cap Option
 B : Blank (No Cap)
 P : Plastic Cap
 Packing Method
 T : In Tube
 R : Tape & Reel

Contact Plating Option	Full Gold Plating	Gold Plating On Contact Area Tin Plating On Solder Area	Full Tin Plating
GA : Gold Flash GC : Gold 10u" GD : Gold 15u" GE : Gold 30u"	SA : Gold Flash SC : Gold 10u" SD : Gold 15u" SE : Gold 30u"	TA : Tin 100u"	

GENERAL TOLERANCE		單位 (UNIT)	料號 (PART NO.)	圖號 (DWG NO.)
X. ± 0.50	X. ° ± 5°	mm	PHA2-M1XX-XXXXX	PHA2-M1XX
.X ± 0.20	.X ° ± 2°	Alice	核對 (CHECKED) Mary	比例 (SCALE) 3:1
.XX ± 0.10	.XX ° ± 1°	Mary	製圖 (DRAWN) Fen-Fen	張數 (SHEET) 1/1
DATE:20080306	SSVZ	Fen-Fen	圖法 (PROJ.)	更改 (REV.) A

IO 允允企業有限公司
 IO PARTS Enterprise Co., Ltd.

名稱 (TITLE): Pin Header Pitch: 2.54mm
 H: 1.5mm, Single Row, SMD Type