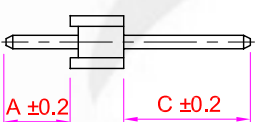
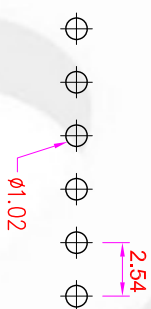
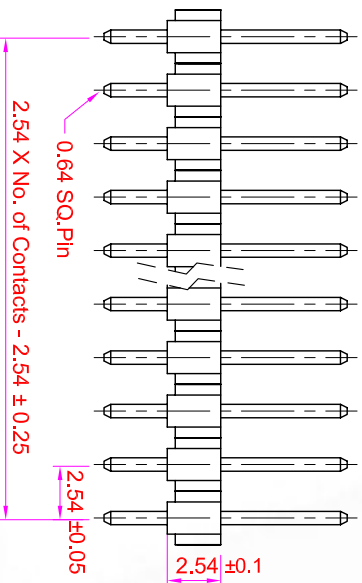
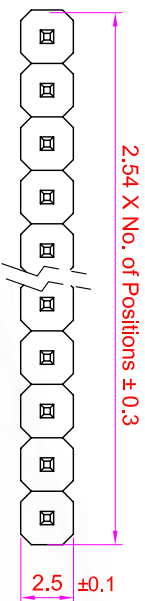


**ROHS**



**Recommended  
P.C. Board Hole Layout**

- Specifications**
- Current Rating : 3 Amps
  - Insulator Resistance : 1000 Megohms min.
  - Contact Resistance : 20 m ohms max.
  - Dielectric Withstanding : AC 600V
  - Operating Temperature : -40° C ~ +105° C
  - Contact Material : Brass
  - Insulator Material : Polyester, UL 94V-0 P.B.T.
  - Contact Plated : See Option
  - Standard: Full Gold Flash

**Order Information**

- PHA1 - S 1 XX - XX XX
- Serial Type \_\_\_\_\_
  - Terminal Type \_\_\_\_\_
  - S : Straight Type
  - Row Type \_\_\_\_\_
  - 1 : Single Row
  - No. of Pin Per Row \_\_\_\_\_
  - Terminal Dim. \_\_\_\_\_
  - 01. A=3.0mm, C=6.0mm (Standard)
  - 02. A=....., C=.....
  - 03. A=....., C=.....
  - Contact Plating \_\_\_\_\_

Contact Plating Option	Full Gold Plating	Gold Plating On Contact Area Tin Plating On Solder Area	Full Tin Plating
GA : Gold Flash GC : Gold 10u" GD : Gold 15u" GE : Gold 30u"	SA : Gold Flash SC : Gold 10u" SD : Gold 15u" SE : Gold 30u"	TA : Tin 100u"	

GENERAL TOLERANCE		單位 (UNIT)
X. ± 0.50	X. ° ± 5°	mm
.X ± 0.20	.X ° ± 2°	
.XX ± 0.10	.XX ° ± 1°	
DATE:2008/03/05	SSJ1	

料號 (PART NO.)	單位 (UNIT)	料號 (PART NO.)	單位 (UNIT)
PHA1-S1XX-XXXX	mm	PHA1-S1XX-XXXX	mm
移對 (CHECKED)	Alice	移對 (CHECKED)	Mary
製圖 (DRAWN)	Fen-Fen	製圖 (DRAWN)	Fen-Fen

圖號 (DWG. NO.)	比例 (SCALE)	圖號 (DWG. NO.)	比例 (SCALE)
PHA1-S1XX	3:1	PHA1-S1XX	3:1
張數 (SHEET)	1/1	張數 (SHEET)	1/1
更改 (REV.)	A	更改 (REV.)	A

**坵允企業有限公司**  
IO PARTS Enterprise Co., Ltd.

名稱 (TITLE): Pin Header P-2.54 X 2.54mm  
Profile : 2.54mm, Single Row, Straight Type