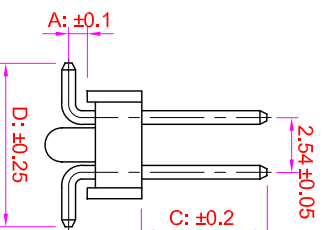
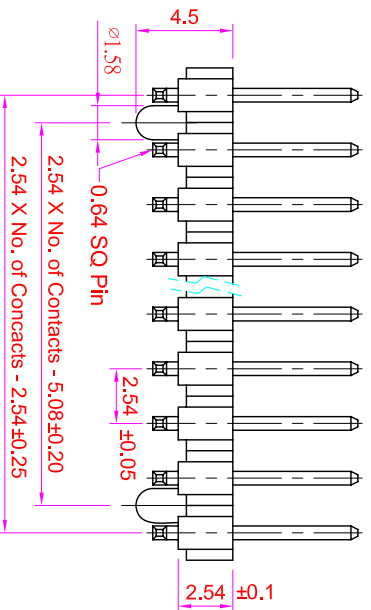
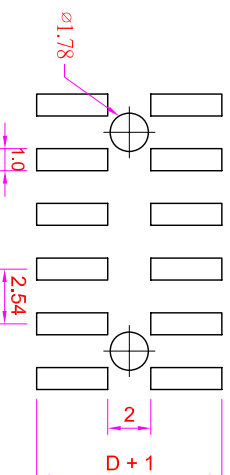
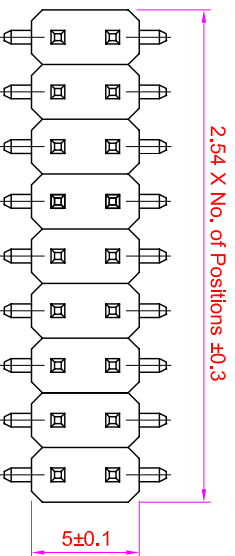


ROHS



Recommended P.C. Board SMD Layout

Specifications
 Current Rating : 3 Amps
 Insulator Resistance : 1000 Megohms min.
 Contact Resistance : 20 m ohms max.
 Dielectric Withstanding : AC 600V
 Operating Temperature : -40° C ~ +105° C
 Contact Material : Brass
 Insulator Material : Polyester, UL 94V-0 Nylon-6T
 Contact Plated : See Option
 Standard: Full Gold Flash

Order Information

PHA1 - M 2 XX - X XX XX - XX
 Serial Type-
 Terminal Type
 M : SMD Type
 Row Type
 2 : Dual Rows
 No. of Pin Per Row
 Post Option
 0 : Without Post
 1 : With Post
 Terminal Dim.:
 02. A=0.95mm , C=5.84mm, D=7.36mm.
 11. A=0.95mm , C=8.13mm, D=7.36mm.
 Contact Plating
 Cap Option
 B : Blank
 P : Plastic Cap
 Packing Method
 T : In Tube
 R : Tape & Reel

Full Gold Plating	Gold Plating On Contact Area	Full Tin Plating
Contact Plating Option	Pin Header Pitch: 2.54 X 2.54mm	TA: Tin 100u"
GA: Gold Flash	SA: Gold Flash	SC: Gold 10u"
GC: Gold 10u"	GD: Gold 15u"	SD: Gold 15u"
GE: Gold 30u"	SE: Gold 30u"	

IO PARTS Enterprise Co., Ltd.

名商 (TITLE): Pin Header Pitch: 2.54 X 2.54mm
 H: 2.54mm, Dual Row, SMD Type

GENERAL TOLERANCE		單位 (UNIT)		料號 (PART NO.)		圖號 (DWG NO.)		名商 (TITLE):	
X. ± 0.50	X. ° ± 5°	mm		PHA1-M2XX-XXXXXX-XX		PHA1-M2XX		IO PARTS Enterprise Co., Ltd.	
. X ± 0.20	. X ° ± 2°	mm		後料 (CHECKED)		SCALE 3:1		Pin Header Pitch: 2.54 X 2.54mm	
. XX ± 0.10	. XX ° ± 1°	Alice		Mary		PROL		H: 2.54mm, Dual Row, SMD Type	
DATE: 2008/07/12	SSV2			Fen-Fen		REV. A			