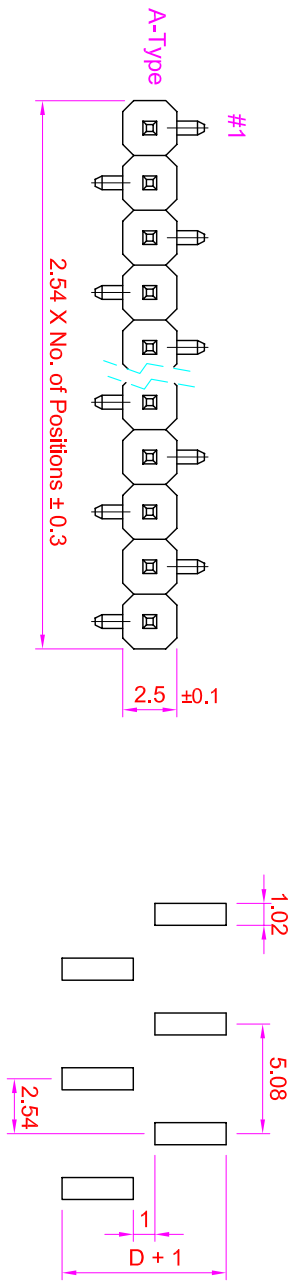
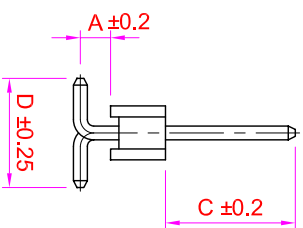
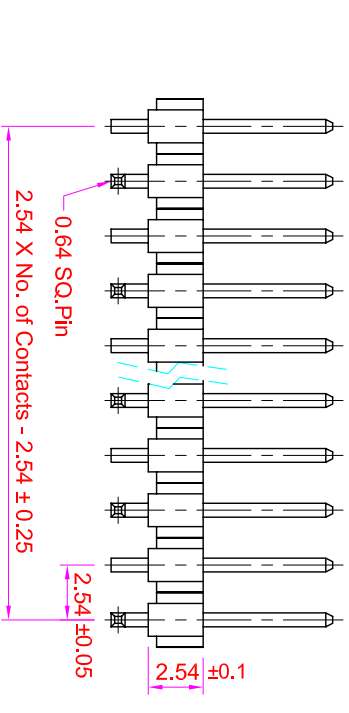
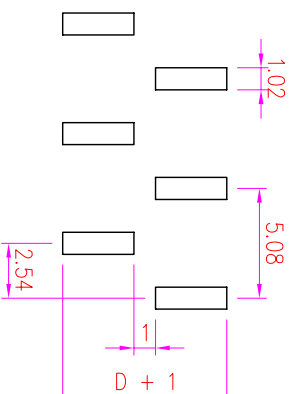
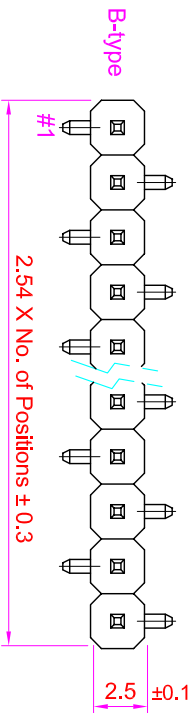


# ROHS

## Recommended P.C. Board SMD Layout



**Specifications**  
 Current Rating : 3 Amps  
 Insulator Resistance : 1000 Megohms min.  
 Contact Resistance : 20 m ohms max.  
 Dielectric Withstanding : AC 600V  
 Operating Temperature : -40°C ~ +105°C  
 Contact Material : Brass  
 Insulator Material : Polyester, UL 94V-0 Nylon-6T  
 Contact Plated : See Option  
 Standard: Full Gold Flash



### Order Information

PHA1 - M 1 XX - X XX XX - XX  
 Serial Type  
 Terminal Type  
 M : SMD Type  
 Row Type  
 1 : Single Row  
 No. of Pin Per Row  
 Pin Type Option  
 A : A Type  
 B : B Type  
 Terminal Dim.  
 01. A=0.7mm, C=6.0mm , D=6.0mm  
 02. A=... C=... D=...  
 03. A=... C=... D=...  
 Contact Plating  
 Cap Option  
 B : Blank  
 P : Plastic Cap  
 Packing Method  
 S : Sample Box  
 T : In Tube

Full Gold Plating	Gold Plating On Contact Area Tin Plating On Solder Area	Full Tin Plating
GA : Gold Flash GC : Gold 10u" GD : Gold 15u" GE : Gold 30u"	SA : Gold Flash SC : Gold 10u" SD : Gold 15u" SE : Gold 30u"	TA : Tin 100u"

GENERAL TOLERANCE		單位 (UNIT)		料號 (PART NO.)		圖號 (DWG NO.)		Rev		Modification		Date		Validate	
X. ± 0.50	X. ° ± 5°	mm		PHA1-M1XX-XXXXX-XX		PHA1-M1XX		A							
.X ± 0.20	.X ° ± 2°	審核 (APPROVAL)		核對 (CHECKED)		比例 (SCALE)		1/1		名商 (TITLE):		Pin Header Pitch: 2.54mm			
.XX ± 0.10	.XX ° ± 1°	Alice		Mary		角法 (PROJ.)		A		H2.54mm, Single Row, SMD Type					
DATE: 2008/07/12		SSVZ		Fen-Fen		REV.				IO PARTS Enterprise Co., Ltd.					

**艾允企業有限公司**  
 IO PARTS Enterprise Co., Ltd.