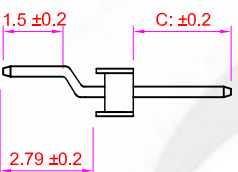
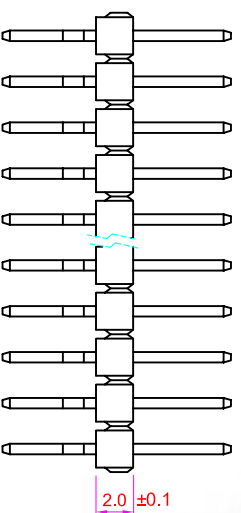
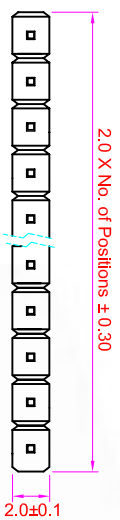


ROHS

Recommended P.C. Board SMD Layout



- Specifications**
- Current Rating : 2 Amps
 - Insulator Resistance : 1000 Megohms min.
 - Contact Resistance : 20 m ohms max.
 - Dielectric Withstanding : AC 500V
 - Operating Temperature : -40°C ~ +105°C
 - Contact Material : Brass
 - Insulator Material : Polyester, UL 94V-0 Nylon-6T
 - Contact Plated : See Option
- Standard: Full Gold Flash

Order Information

- PHB2 - H 1 XX - XX XX - XX
- Serial No. _____
 - Terminal Type _____
 - H : Horizontal SMD Type
 - Row Type _____
 - 1 : Single Row
 - No. of Contact Per Row _____
 - Terminal Dom. _____
 - 01 : C=.....
 - 02 : C=.....
 - 03 : C=.....
 - Contact Plated _____
 - Cap Option _____
 - B: Blank (Non Cap)
 - P: Plastic Cap
 - Packing Method _____
 - T: Tube
 - R : Tape & Reel

Contact Plating Option	Full Gold Plating	Gold Plating On Contact Area Tin Plating On Solder Area	Full Tin Plating
GA : Gold Flash GC : Gold 10u" GD : Gold 15u" GE : Gold 30u"	SA : Gold Flash SC : Gold 10u" SD : Gold 15u" SE : Gold 30u"	TA : Tin 100u"	

GENERAL TOLERANCE		單位 (UNIT)		料號 (PART NO.)		圖號 (DWG NO.)		名稱 (TITLE)				
X. ± 0.50	X. ° ± 5°	mm		PHB2-R1XX-XXXX-XX	PHB2-H1XX	比例 SCALE	3:1	圖號 SHEET	1/1	IO PARTS Enterprise Co.,Ltd.		Pin Header P:2.0 X 2.0 mm
.X X ± 0.20	.X ° ± 2°	Alice		校對 (CHECKED)	Mary	圖號 PROJ.		更改 REV.	A	IO PARTS Enterprise Co.,Ltd.		H2.54mm, Horizontal SMD Type
.X X ± 0.10	.X X ° ± 1°	SUV-1		製圖 (DRAWN)	Fen-Fen	圖號 PROJ.		更改 REV.		IO PARTS Enterprise Co.,Ltd.		
DATE:2009/04/08										IO PARTS Enterprise Co.,Ltd.		

IO PARTS Enterprise Co.,Ltd.

Pin Header P:2.0 X 2.0 mm
H2.54mm, Horizontal SMD Type