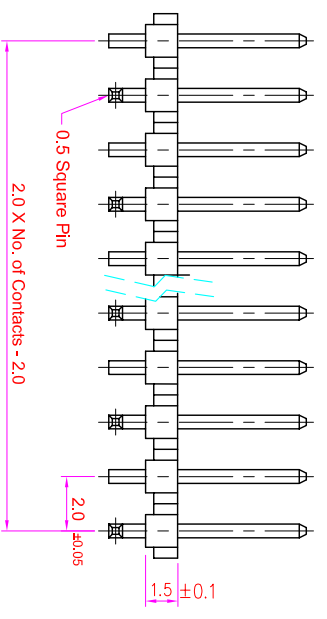
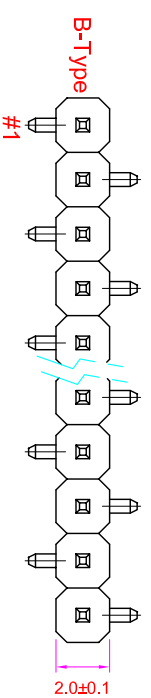
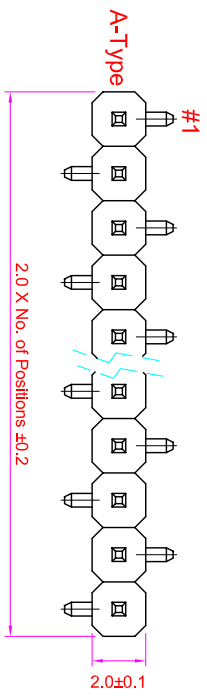
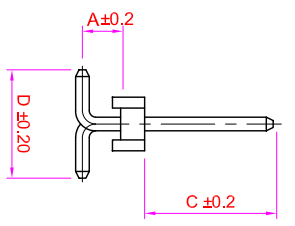
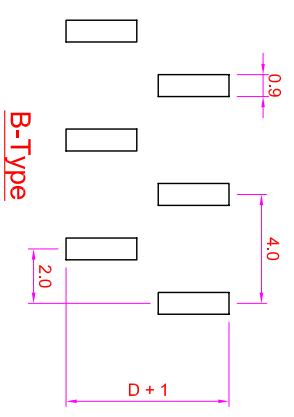
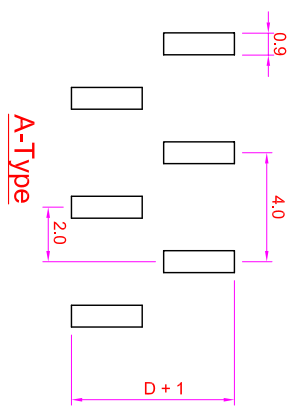


RoHS



Recommended  
P.C. Board Hole Layout



**Specifications**  
 Current Rating : 3 Amps  
 Insulator Resistance : 1000 Megohms min.  
 Contact Resistance : 20 m ohms max.  
 Dielectric Withstanding : AC 500V  
 Operating Temperature : -40°C ~ +105°C  
 Contact Material : Brass  
 Insulator Material : Polyester, UL 94V-0 Nylon-6T  
 Contact Plated : See Option  
 Standard: Full Gold Flash

Order Information

PHB1 - M 1 XX - X XX XX - X X  
 Serial Type  
 Terminal Type  
 M : SMT Type  
 Row Type  
 1 : Single Row  
 No. of Pin per Row  
 Pin Layout Type  
 A-A-Type  
 B-B-Type  
 Terminal Dim.  
 01. A=....., C=....., D=.....  
 02. A=....., C=....., D=.....  
 03. A=....., C=....., D=.....  
 Contact Plating  
 Cap Option  
 B : No Cap  
 Packing Method  
 P : Plastic Cap  
 T : In Tube  
 R : Tape & Reel

Full Gold Plating	Gold Plating On Contact Area	Full Tin Plating
GA : Gold Flash GC : Gold 10u" GD : Gold 15u" GE : Gold 30u"	Tin Plating On Solder Area	TA : Tin 100u"
SA : Gold Flash SC : Gold 10u" SD : Gold 15u" SE : Gold 30u"		

GENERAL TOLERANCE		單位 (UNIT)	料號 (PART NO.)	圖號 (DWG NO.)	縮尺 (SCALE)	圖號 (DWG NO.)	縮尺 (SCALE)	圖號 (DWG NO.)	縮尺 (SCALE)
X ± 0.50	X ° ± 5°	mm	PHB1-M1XX-XXXXX-XX	PHB1-M1XX	3:1	PHB1-M1XX	3:1	PHB1-M1XX	3:1
.X ± 0.20	.X ° ± 2°		審核 (APPROVAL)	製圖 (DRAWN)	PROL.	製圖 (DRAWN)	PROL.	製圖 (DRAWN)	PROL.
.XX ± 0.10	.XX ° ± 1°		Alice	Fen-Fen		Fen-Fen		Fen-Fen	
DATE:2009/03/05	SCM1		Mary						

宏允企業有限公司  
IO PARTS Enterprise Co., Ltd.

Pin Header P2.0mm  
H:1.5mm Single Row, SMD Type