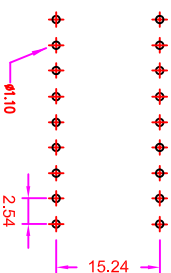


ROHS

Recommended
P.C. Board Hole Layout



NOTES:

1. MATERIAL

- 1.1 Insulator:PBT+30%Glass Fiber (UL94V-0)
- 1.2 Contact:Brass
- 1.3 Contact Plated:Gold/TIN PLATED

2. SPECIFICATION

- 2.1 Current Rate:1 Amps
- 2.2 Insulator Resistance:1000MΩ Min. at 500V DC
- 2.3 Contact Resistance:15 Million hms Max.
- 2.4 Operation Temperature:-40C to+105C

Order Information

IP A3 - S 0 XX - 0 0 SA - B

Serial No. _____

Contact Type _____

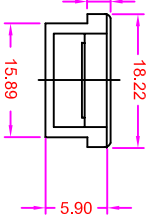
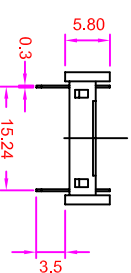
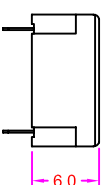
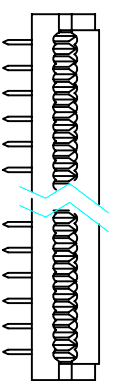
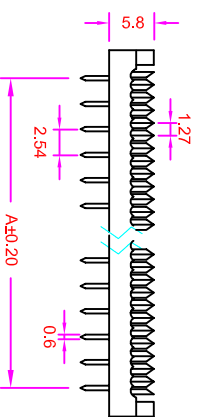
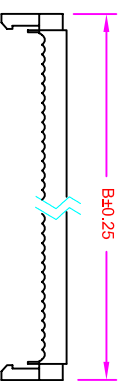
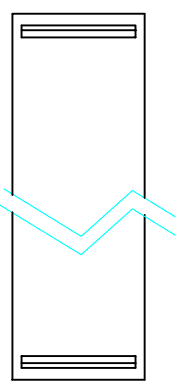
S : Straight Dip Type

Contact Number _____
24pin ~40pin

Contact Plated _____
SA: selective Gold Flash

Insulator Color _____
B: Black Color G: Grey Color

Pos.	A	B
24	27.94	35.74
28	33.02	40.82
32	38.10	45.90
34	40.64	48.44
36	43.18	50.98
40	48.26	56.06



Rev	Modification	Date	Validate

GENERAL TOLERANCE		單位 (UNIT)		料號 (PART NO.)		圖號 (DWG NO.)		名稱 (TITLE):	
X. ± 0.50	X. ° ± 5°	mm	mm	IP A3-S0XX-0XSA-B	IP A3-S0XX	3:1	1/1	2.54mm*15.24mm Transition IDC Connector	
.X ± 0.20	.X ° ± 2°	Alice	Mary	Fen-Fen	SCALE	3:1	SHEET	允允企業有限公司	
.X X ± 0.10	.X X ° ± 1°	DATE:2009/02/18	STU	DATE:2009/02/18	REV.	A	REV.	IO PARTS Enterprise Co., Ltd.	

允允企業有限公司
IO PARTS Enterprise Co., Ltd.