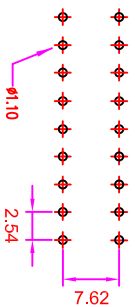


ROHS

Recommended
P.C. Board Hole Layout



NOTES:

1.MATERIAL

- 1.1 Insulator:PBT+30%Glass Fiber (UL94V-0)
- 1.2 Contact:Brass
- 1.3 Contact Plated:Gold/TIN PLATED

2.SPECIFICATION

- 2.1 Current Rate:1 Amps
- 2.2 Insulator Resistance:1000M Ω Min. at 500V DC
- 2.3 Contact Resistance:15 Million hms Max.
- 2.4 Operation Temperature:-40 $^{\circ}$ C to+105 $^{\circ}$ C

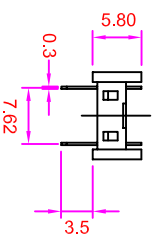
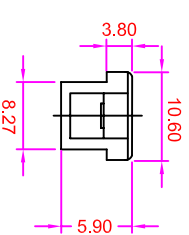
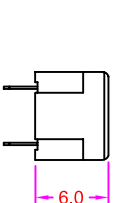
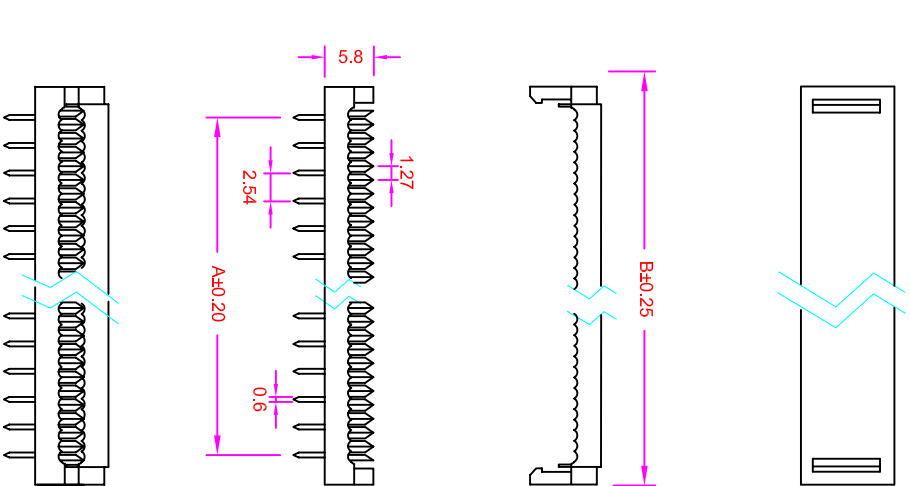
Order Information

IP A2 - S 0 XX - 0 0 SA - B
 Serial No. _____
 Contact Type _____
 S : Straight Dip Type

Contact Number _____
 08pin ~40pin

Contact Plated _____
 SA: selective Gold Flash

Insulator Color _____
 B: Black Color G: Grey Color



Pos.	A	B
8	7.62	15.42
10	10.16	17.96
14	15.24	23.04
16	17.78	25.58
18	20.32	28.12
20	22.86	30.66
24	27.94	35.74
28	33.02	40.82
40	48.26	56.06

GENERAL TOLERANCE		單位 (UNIT)		料號 (PART NO.)		圖號 (DWG NO.)		名稱 (TITLE):	
X. \pm 0.50	X. \pm 5 $^{\circ}$	mm	mm	IP A2-S0XX-0XS A-B	IP A2-S0XX	比例 SCALE 3:1	縮小 1/1	迄允企業有限公司 IO PARTS Enterprise Co., Ltd.	
.X \pm 0.20	.X \pm 2 $^{\circ}$			核對 (CHECKED) Mary	製圖 (DRAWN) Fen-Fen	明法 PROU.	更改 REV. A	2.54mm*7.62mm Transition IDC Connector	
.X X \pm 0.10	.X X \pm 1 $^{\circ}$			審核 (APPROVAL) Alice					
DATE:2009/02/18	STU								