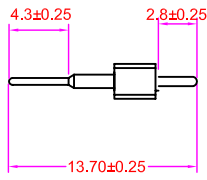
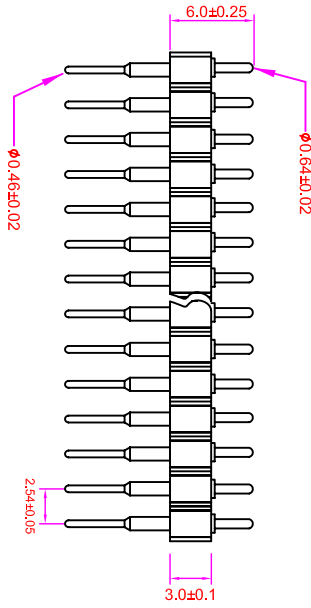
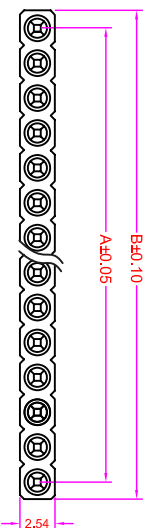


ROHS



**Recommended
P.C. Board Hole Layout**

Specifications
 Current Rating : 3 Amps
 Insulator Resistance : 1000 Megohms min.
 Operating Temperature : -40°C ~ +105°C
 Contact Material : Brass , Machined.C3602
 Insulator Material : PPS, UL 94V-0
 Contact Plated : 80u" Nickel underplated.
 1u" Gold Plated.
 Or 100u" Tin Over Tin Plated.

Order Information

MPA4 - S 1 XX - 00 XX

Serial No. _____
 Terminal Type _____
 S : Straight Type
 Row Type _____
 1 : Single Row
 No. of Contact Per Row _____
 Contact Plated _____
 GA: Full Gold Flash Plated (Standard)
 TA: Full Tin Plated



No. Of Pins/Row	Dimension		No. Of Pins/Row	Dimension		No. Of Pins/Row	Dimension		No. Of Pins/Row	Dimension	
	A	B		A	B		A	B		A	B
1	2.54	5.08	11	25.40	27.94	21	50.80	53.34	31	76.25	78.74
2	2.54	5.08	12	27.94	30.48	22	53.34	55.88	32	78.74	81.28
3	5.08	7.62	13	30.48	33.02	23	55.88	58.42	33	81.23	83.82
4	7.62	10.16	14	33.02	35.56	24	58.42	60.96	34	83.72	86.36
5	10.16	12.70	15	35.56	38.10	25	60.96	63.50	35	86.21	88.90
6	12.70	15.24	16	38.10	40.64	26	63.50	66.04	36	88.70	91.44
7	15.24	17.78	17	40.64	43.18	27	66.04	68.58	37	91.19	93.98
8	17.78	20.32	18	43.18	45.72	28	68.58	71.12	38	93.68	96.52
9	20.32	22.86	19	45.72	48.26	29	71.12	73.66	39	96.17	99.06
10	22.86	25.40	20	48.26	50.80	30	73.66	76.20	40	98.66	101.60

GENERAL TOLERANCE		單位 (UNIT)		料號 (PART NO.)		圖號 (DWG NO.)		名稱 (TITLE):	
X. ± 0.50	X. ° ± 5°	mm		MPA4-S1XX-00GA		MPA4-S1XX		Pin Header 2.54 Machine Pin H:3.0mm	
.X ± 0.20	.X ° ± 2°	Alice		Mary		Fen-Fen		Pin Length:13.70mm, Single Row, Straight Type	
.XX ± 0.10	.XX ° ± 1°	SMR		DATE:2009/10/19					

拓允企業有限公司
 IO PARTS Enterprise Co., Ltd.

J 1 2 3 4 5 6 7 8 9 10 11 12