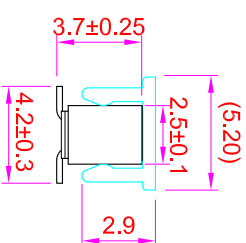
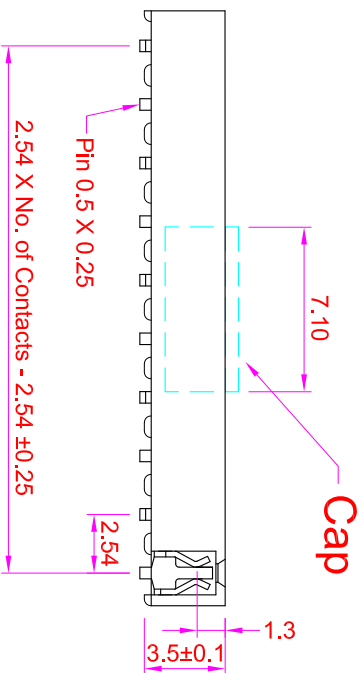
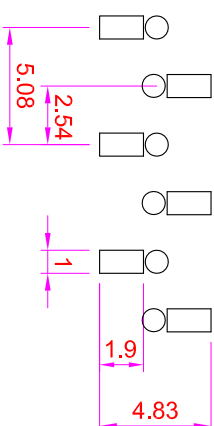
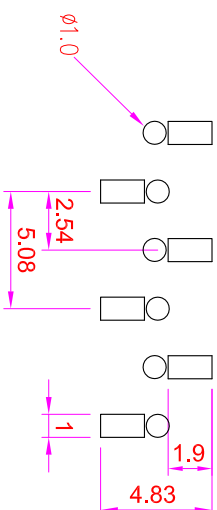
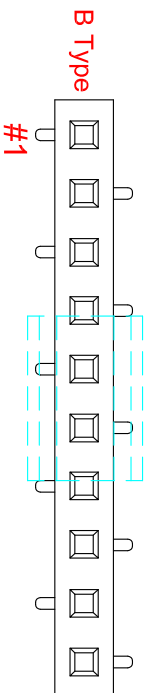
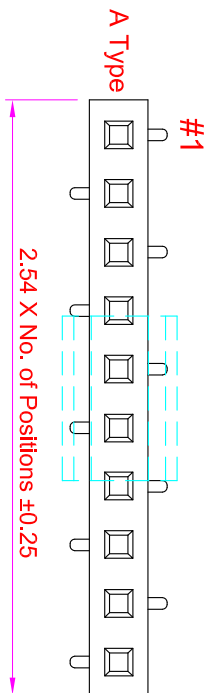


ROHS

Recommended P.C. Board SMD Layout



- Specifications**
- Current Rating : 3 Amps
 - Insulator Resistance : 1000 Megohms min.
 - Contact Resistance : 20 m ohms max.
 - Dielectric Withstanding : AC 600V
 - Operating Temperature : -40°C ~ +105°C
 - Contact Material : Phosphor Bronze
 - Insulator Material : Polyester, UL 94V-0 Nylon-9T
 - Contact Plated : See Option
 - Standard: Full Gold Flash

Order Information

- FHAH - M 1 XX - 0 X XX - XX
- Serial No. _____
 - Terminal Type _____
 - M : SMD Type _____
 - Row Type _____
 - 1 : Single Row _____
 - No. of Contact per Row _____
 - Pin Option _____
 - A : A Type _____
 - B : B Type _____
 - Contact Plated _____
 - Cap Option _____
 - B : Blank _____
 - F : Film _____
 - M : Metal Cap _____
 - P : Plastic Cap _____
 - Packing Method _____
 - T : In Tube _____
 - R : Tape & Reel _____

Contact Plating Option	Full Gold Plating	Gold Plating On Contact Area Tin Plating On Solder Area	Full Tin Plating
GA : Gold Flash GC : Gold 10u" GD : Gold 15u" GE : Gold 30u"	SA : Gold Flash SC : Gold 10u" SD : Gold 15u" SE : Gold 30u"	TA : Tin 100u"	

GENERAL TOLERANCE		單位 (UNIT)	
X. ± 0.50	X. ° ± 5°	mm	
.X ± 0.20	.X ° ± 2°		
.XX ± 0.10	.XX ° ± 1°		
DATE:2009/05/05	SCM1		

料號 (PART NO.)	審核 (APPROVAL)	料號 (CHECKED)	料號 (DRAWN)
FHAH-M1XX-0XXX-XX	Alice	Mary	Fen-Fen

圖號 (DWG NO.)	比例 (SCALE)	張數 (SHEET)	張次 (REV.)
FHAH-M1XX-0X	3:1	1/1	C

宏允企業有限公司
IO PARTS Enterprise Co., Ltd.

名稱 (TITLE): Female Header P2.54mm
Profile : 3.5mm, Single Row, 3 Contacts SMD Type