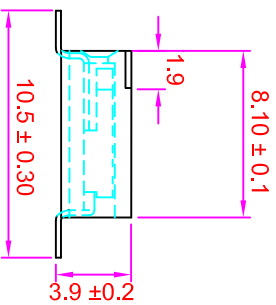
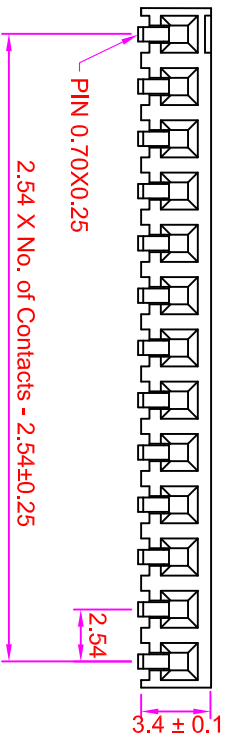
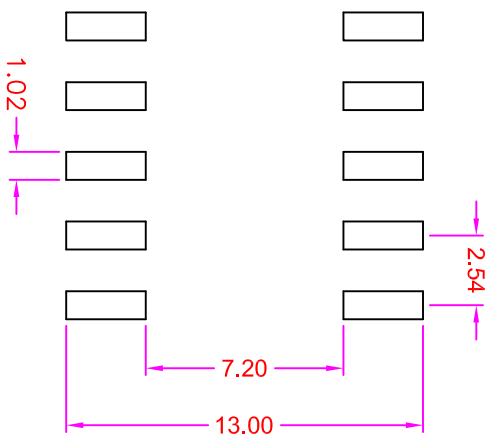
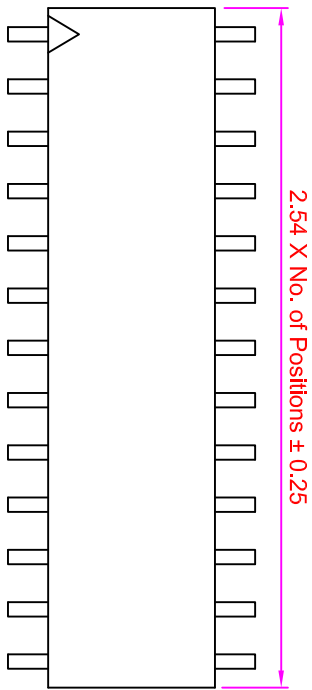


ROHS

Recommended P.C. Board SMD Layout



Specifications

Current Rating : 3 Amps
 Insulator Resistance : 1000 Megohms min.
 Contact Resistance : 20 m ohms max.
 Dielectric Withstanding : AC 600V
 Operating Temperature : -40°C ~ +105°C
 Contact Material : Phosphor Bronze
 Insulator Material : Polyester, UL 94V-0
 Standard : Nylon-9T
 Contact Plated : See Option / Standard: Full Gold

Order Information

FHA8 - M 1 XX - 00 XX - XX

Serial No.: _____
 Terminal Option _____
 M : SMD Type _____
 Row Option _____
 1 : Single Row _____
 No. of Contact Per Row _____
 Contact Plated _____
 Cap Option _____
 B : No Cap _____
 Packing Method _____
 T : In Tube _____
 R : Tape & Reel _____

Contact Plating Option	Full Gold Plating	Gold Plating On Contact Area Tin Plating On Solder Area	Full Tin Plating
	GA : Gold Flash GC : Gold 100" GD : Gold 150" GE : Gold 300"	SA : Gold Flash SC : Gold 100" SD : Gold 150" SE : Gold 300"	TA : Tin 1000"

GENERAL TOLERANCE		單位 (UNIT)	
X. ± 0.50	X. $\pm 5^\circ$	mm	
.X X ± 0.20	.X $\pm 2^\circ$	Alice	
.X X ± 0.10	.X X $\pm 1^\circ$	Mary	
DATE:2008/03/05	SCM1	Fen-Fen	

料號 (PART NO.)	FHA8-M1XX-00XX-XX
審核 (CHECKED)	Mary
製圖 (DRAWN)	Fen-Fen

圖號 (DWG NO.)	FHA8-M1XX
比例 (SCALE)	3:1
張數 (SHEET)	1/1
圖法 (PROJ.)	A

玖允企業有限公司
 IO PARTS Enterprise Co., Ltd.
 名稱 (TITLE): Female Header Pitch 2.54mm
 Profile : 3.40mm, Single Row, Side Entry Type