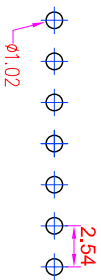
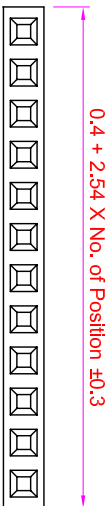


**ROHS**



**Recommended  
P.C. Board Hole Layout**

**Specifications**

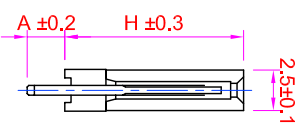
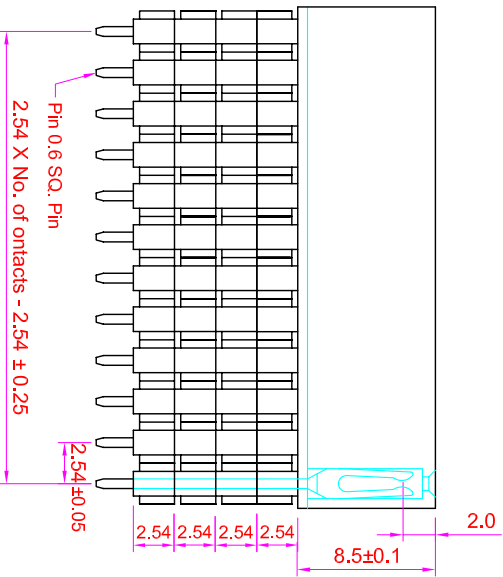
- Current Rating : 3 Amps
- Insulator Resistance : 1000 Megohms min.
- Contact Resistance : 20 m ohms max.
- Dielectric Withstanding : AC 600V
- Operating Temperature : -40° C ~ +105° C
- Contact Material : Brass
- Insulator Material : Polyester, UL 94V-0 P.B.T.
- Contact Plated : See Option / Standard: Full Gold Flash

**Order Information**

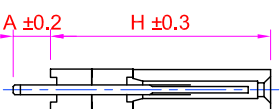
FHA6 - S 1 XX - XXX XX

- Serial Type
- Terminal Type
- S : Straight Type
- Row Type
- 1 : Single Row
- No. of Pin per Row
- Elevated Story Option
- See Option
- Contact Plating

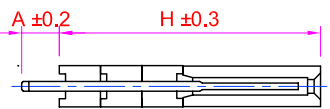
Full Gold Plating	Gold Plating On Contact Area Tin Plating On Solder Area	Full Tin Plating
GA : Gold Flash GC : Gold 10u" GD : Gold 15u" GE : Gold 30u"	SA : Gold Flash SC : Gold 10u" SD : Gold 15u" SE : Gold 30u"	TA : Tin 100u"



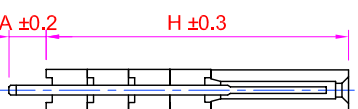
1 Story



2 Stories



3 Stories



4 Stories

**Option**

Elevated Story Option	H	A
1EA	11.04	7.38
1EB	11.04	12.20
1EC	11.04	2.30
2EA	13.58	4.84
2EB	13.58	9.65
3EA	16.12	2.30
3EB	16.12	7.10
3EC	16.12	3.50
4EA	18.66	4.60

**GENERAL TOLERANCE**

X. ± 0.50	X. ° ± 5°
.X ± 0.20	.X ° ± 2°
.XX ± 0.10	.XX ° ± 1°

**單位 (UNIT)**

mm	料號 (PART NO.)
Alice	FHA6-S1XX-XXXXX
Mary	Fen-Fen

**圖號 (DWG NO.)**

比例 SCALE	張數 SHEET
3:1	1/1

**名稱 (TITLE):**

Female Header P2.54mm  
Elevated Story, Single Row, Straight Type



允企業有限公司  
IO PARTS Enterprise Co., Ltd.

Rev	Modification	Date	Validate