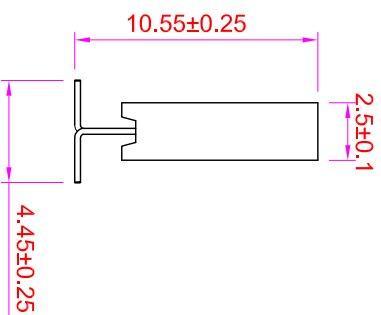
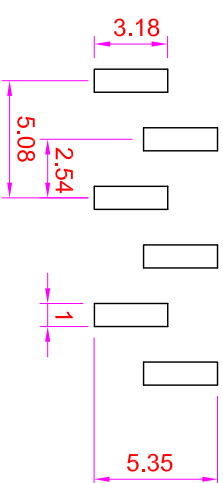
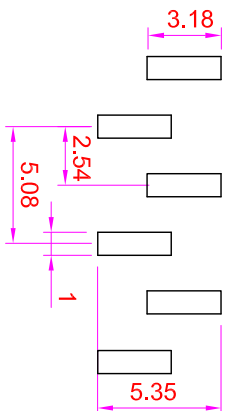
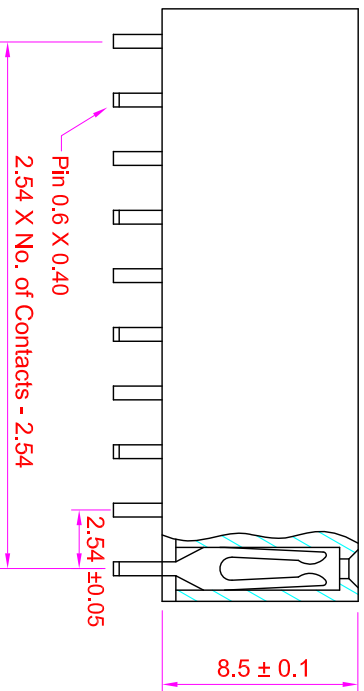
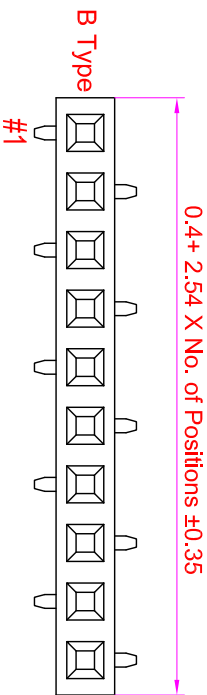
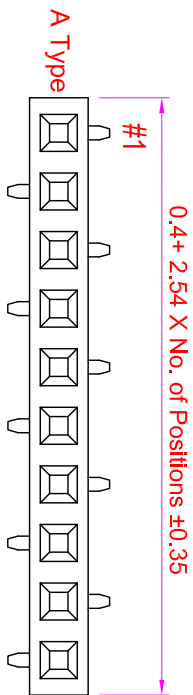


# ROHS

## Recommended P.C. Board SMD Layout



Rev	Modification	Date	Drawn

### Specifications

- Current Rating : 3 Amps
- Insulator Resistance : 1000 Megohms min.
- Contact Resistance : 20 m ohms max.
- Dielectric Withstanding : AC 600V
- Operating Temperature : -40°C ~ +105°C
- Contact Material : Brass
- Insulator Material : Polyester, UL 94V-0 Nylon-6T
- Contact Plated : See Option
- Standard: Full Gold Flash

### Order Information

- FHA3 - M 1 XX - 0 X XX - B T
- Serial No. \_\_\_\_\_
  - Terminal Type \_\_\_\_\_
  - M : SMD Type \_\_\_\_\_
  - Row Type \_\_\_\_\_
  - 1 : Single Row \_\_\_\_\_
  - No. of Contact per Row \_\_\_\_\_
  - Pin Option \_\_\_\_\_
  - A : A Type \_\_\_\_\_
  - B : B Type \_\_\_\_\_
  - Contact Plated \_\_\_\_\_
  - Cap Option \_\_\_\_\_
  - B : No Cap \_\_\_\_\_
  - Packing Method \_\_\_\_\_
  - T : In Tube (Tube-018) \_\_\_\_\_

Contact Plating Option	Full Gold Plating	Gold Plating On Contact Area Tin Plating On Solder Area	Full Tin Plating
GA : Gold Flash GC : Gold 10u" GD : Gold 15u" GE : Gold 30u"	SA : Gold Flash SC : Gold 10u" SD : Gold 15u" SE : Gold 30u"	TA : Tin 100u"	

GENERAL TOLERANCE		單位 (UNIT)		料號 (PART NO.)		圖號 (DWG NO.)	
X. ± 0.50	X. ° ± 5°	mm	mm	FHA3-M1XX-0XXX-XX	FHA3-M1XX-0X	比例 SCALE	張數 SHEET
.X ± 0.20	.X ° ± 2°	Alice	Alice	Mary	Fen-Fen	3:1	1/1
.XX ± 0.10	.X X ° ± 1°	審核 (APPROVAL)	檢驗 (CHECKED)	製圖 (DRAWN)	布法 (PROJ.)	REV.	B
DATE:2019/01/31	SCM1						

**玖允企業有限公司**  
IO PARTS Enterprise Co., Ltd.

名稱 (TITLE): Female Header P2.54mm  
Profile : 8.5mm, Single Row, SMD Type